

the party 2015

FOR IMMEDIATE RELEASE
THURSDAY, DECEMBER 4, 2014

Contact: Jennifer Parks
Rose+Moser+Allyn Public and Online Relations
Cell: 480.495.3806
Email: JParks@RoseMoserAllynPR.com

****MEDIA ALERT/pARTy Details!****

Meet the Chairs for the pARTy 2015

My Sister's Closet Founder Ann Siner, Chief Fashion Stylist Tess Loo and Philanthropist Cheryl Londen Join Forces to Throw the pARTy Featuring the Andy Warhol: Portraits Exhibition



(PHOENIX) More than 25 years after his death, Andy Warhol remains undeniably one of the most influential figures in Contemporary art, and so it is with great honor the 2015 event co-chairs invite you to attend the **pARTy**, Phoenix Art Museum's annual fundraiser on **Saturday, February 28th**

Chaired by the CEO and Founder of [My Sister's Closet](#), the Valley's largest family designer consignment shops, Ann Siner joins forces with sister and Chief Fashion Stylist, Tess Loo and Philanthropist Cheryl Londen to put on a fascinating evening complete with mod-cocktails, dinner, dancing, a fashion collaboration with Neiman Marcus and the first glimpse at the new exhibition [Andy Warhol: Portraits](#).

"Andy Warhol is an icon and his portraits, paintings and drawings are still an inspiration for many of us in the fashion industry today," said Siner. "We want this night to be a celebration of his works and also the biggest pARTy to kick-off the only Warhol exhibit of its kind in the southwest."

The pARTy will be held at the Phoenix Art Museum located at 1625 N. Central Avenue in Phoenix. Proceeds from the annual fundraiser will support the Museum's exhibitions and programs. Tickets are currently available for the pARTy at www.phxart.org/theparty.

Phoenix Art Museum presents *Andy Warhol: Portraits*, an exhibition organized by and featuring original works from The Andy Warhol Museum, one of the four Carnegie Museums of Pittsburgh from **March 4 to June 21, 2015**.

Field Code Changed

The party 2015

As an artist, Andy Warhol's unique visual language tells the story of an artist fascinated with the phenomena of fame and celebrity. Warhol's visual explorations span almost every available medium: drawing, painting, printmaking, photography, silk screening, sculpture, film and even music.

Comment [CS1]: Please know the banana is not part of the exhibition.

This exhibition features Warhol's depictions of the persona that forever embedded celebrities like Marilyn Monroe, Sylvester Stallone and Prince – to name a few – into America's cultural conscience as well as several of his self-portraits including silkscreen works, Polaroid's of the artist in drag, and family photographs of a young Warhol. *Andy Warhol: Portraits* includes nearly 200 portraits, paintings and drawings produced by Warhol from the 1940s to the 1980s.

To set-up an interview with one of the pARTy co-chairs or to get pictures of the exhibit or at the event please contact **Jennifer Parks** at **480.495.3806** or JParks@RoseMoserAllynPR.com.

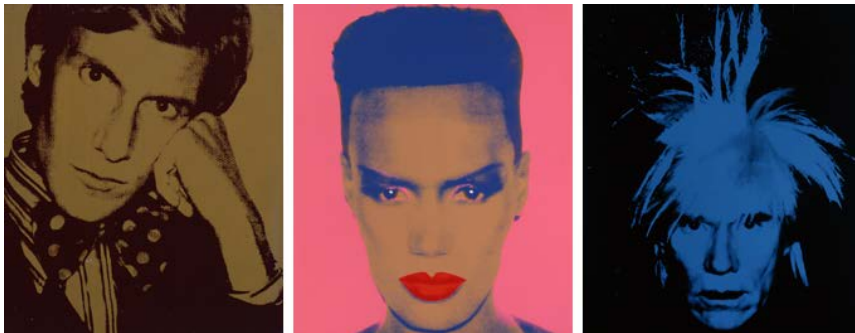


Image Credits

Right: Andy Warhol, *Yves Saint Laurent*, 1972, Acrylic and silkscreen ink on linen. **Middle:** Andy Warhol, *Grace Jones*, 1986. Acrylic and silkscreen ink on linen. **Left:** Andy Warhol, *Self-Portrait*, 1986. Acrylic and silkscreen ink on linen. All images courtesy of The Andy Warhol Museum, Pittsburgh; Founding Collection. © 2014 The Andy Warhol Foundation for the Visual Arts, Inc. / Artists Rights Society (ARS), New York.

About Phoenix Art Museum

Phoenix Art Museum has provided access to visual arts and educational programs in Arizona for more than 50 years and is the largest art museum in the Southwestern United States. Critically acclaimed national and international exhibitions are shown alongside the Museum's collection of more than 17,000 works of American, Asian, European, Latin American, Western American, modern and contemporary art, and fashion design. Visitors also enjoy vibrant photography exhibitions through the Museum's landmark partnership with the Center for Creative Photography, University of Arizona. To learn more about Phoenix Art Museum, visit PhxArt.org, or call the 24-hour recorded information line at (602) 257-1222.

the party 2015

###

